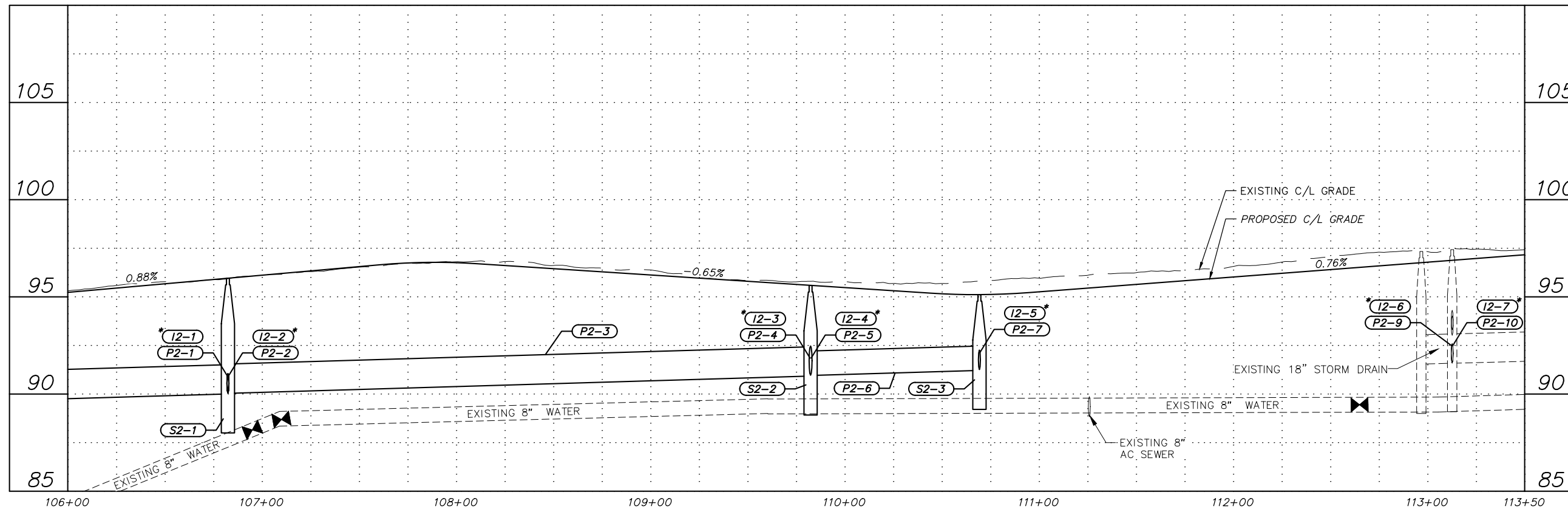
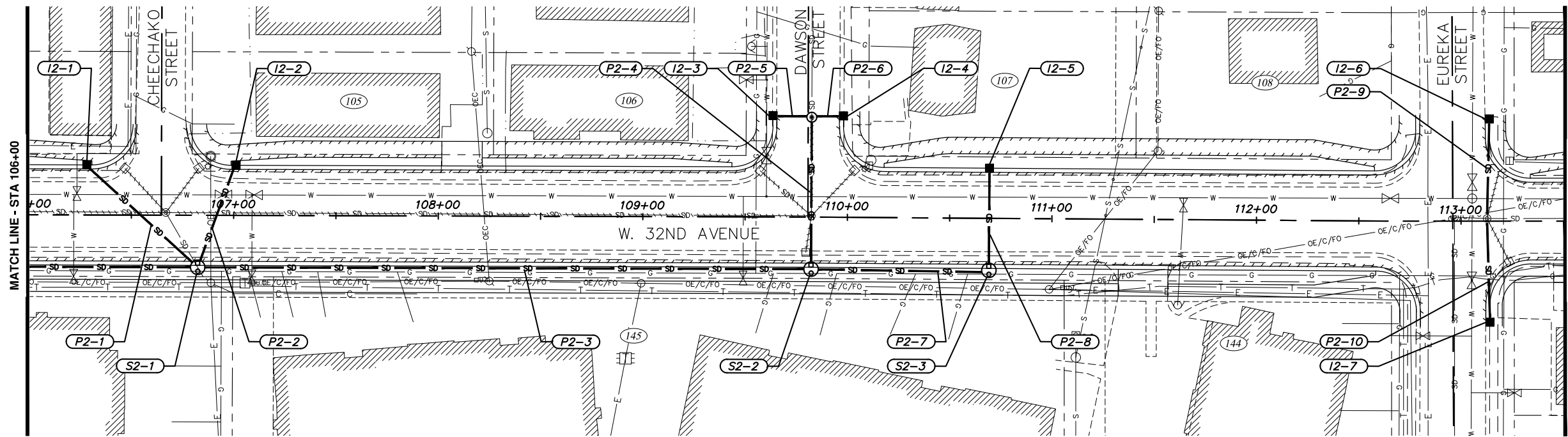


Storm Drain Plan & Profile Drawings

# Appendix C





File: E:\jobdata\10138.00 W 32nd Ave Upgrade\00 CADD\01 Working Set\01 Civil\10138.00 Plan And Profile - Storm Drain\_Alt 1.dwg

**RECORD DRAWING**  
 1. DATA PROVIDED BY: \_\_\_\_\_ TITLE: \_\_\_\_\_  
 THIS WILL SERVE TO CERTIFY THAT THESE RECORD DRAWINGS ARE A TRUE AND ACCURATE REPRESENTATION OF THE PROJECT AS CONSTRUCTED.  
 CONTRACTOR: \_\_\_\_\_ DATE: \_\_\_\_\_  
 BY: \_\_\_\_\_  
 2. DATA TRANSFERRED BY: \_\_\_\_\_ TITLE: \_\_\_\_\_  
 COMPANY: \_\_\_\_\_ DATE: \_\_\_\_\_  
 3. BASED ON PERIODIC FIELD OBSERVATIONS BY THE ENGINEER (OR AN INDIVIDUAL UNDER HIS/HER DIRECT SUPERVISION), THE CONTRACTOR-PROVIDED DATA APPEARS TO REPRESENT THE PROJECT AS CONSTRUCTED.  
 DATA TRANSFER CHECKED BY: \_\_\_\_\_ TITLE: \_\_\_\_\_  
 COMPANY: \_\_\_\_\_ DATE: \_\_\_\_\_  
 BY: \_\_\_\_\_

DATA	DRAWN BY	CHECKED BY
BASE		
TOPOGRAPHY		
PROFILE		
STORM SEWER		
WATER/SANITARY SEWER		
GAS		
TELEPHONE		
ELECTRIC		
DESIGN		
QUANTITIES		
PRELIMINARY/FINAL		
MUNICIPAL/STATE		

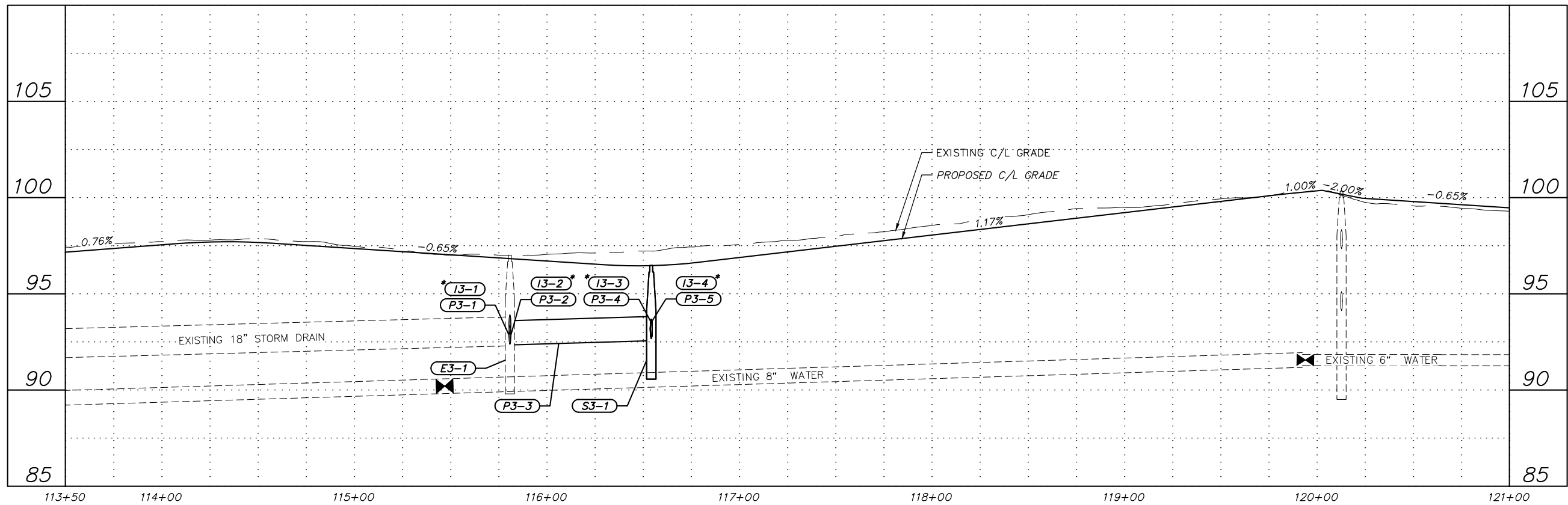
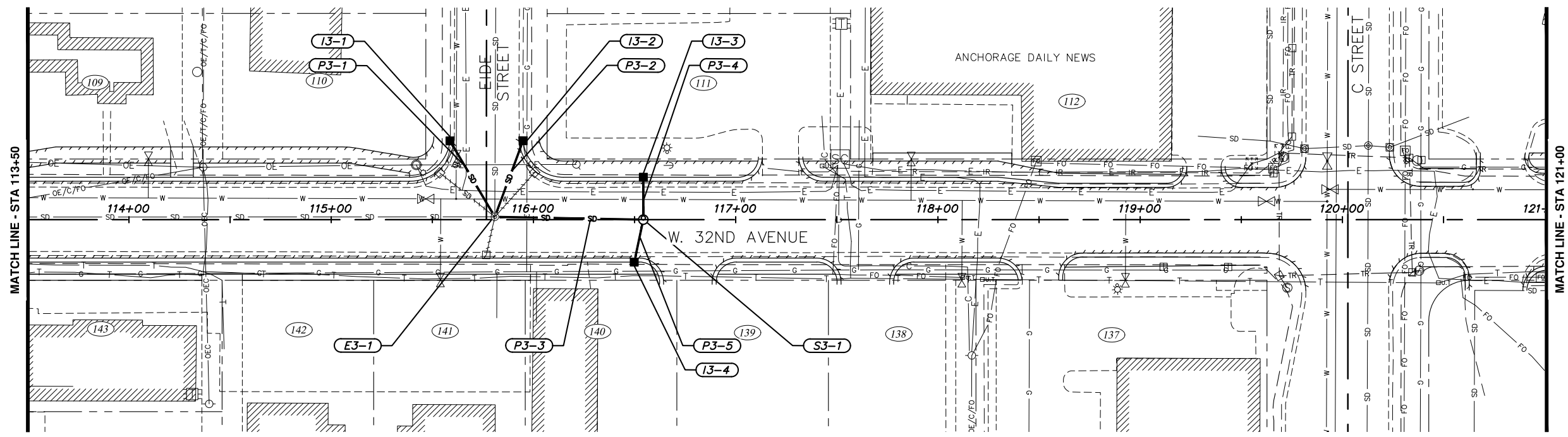
FIELD BOOKS	BM NO.	LOCATION	ELEV.	REV	DATE	DESCRIPTION	BY



**CRW ENGINEERING GROUP, LLC**  
 3940 ARCTIC BLVD, SUITE 300  
 ANCHORAGE, ALASKA 99503  
 PHONE: (907) 562-3252  
 #AEC1882-AR



**PROJECT MANAGEMENT AND ENGINEERING DEPARTMENT**  
 16-29 W. 32ND AVE & E. 33RD AVE UPGRADES SCHED B  
 ARCTIC BOULEVARD TO OLD SEWARD HIGHWAY  
**STORM DRAIN PLAN AND PROFILE**  
 W. 32ND AVENUE  
 STA. 106+00 TO 113+50  
 SCALE HOR. 1"=30'  
 VER. 1"=3'  
 GRID SW630, SW631  
 DATE DEC 2017 STATUS DSR SHEET C2 of C9



File: s:\jobdata\10136.00 W 32nd Ave E 33rd Avenue Upgrade\00 CADD\01 Working Set\01 Civil\10136.00 Plan And Profile - Storm Drain\_Alt 1.dwg

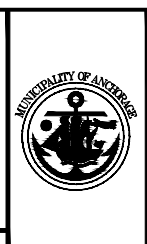
**RECORD DRAWING**  
 1. DATA PROVIDED BY: \_\_\_\_\_ TITLE: \_\_\_\_\_  
 THIS WILL SERVE TO CERTIFY THAT THESE RECORD DRAWINGS ARE A TRUE AND ACCURATE REPRESENTATION OF THE PROJECT AS CONSTRUCTED.  
 CONTRACTOR: \_\_\_\_\_ TITLE: \_\_\_\_\_ DATE: \_\_\_\_\_  
 BY: \_\_\_\_\_  
 2. DATA TRANSFERRED BY: \_\_\_\_\_ TITLE: \_\_\_\_\_  
 COMPANY: \_\_\_\_\_ DATE: \_\_\_\_\_  
 3. BASED ON PERIODIC FIELD OBSERVATIONS BY THE ENGINEER (OR AN INDIVIDUAL UNDER HIS/HER DIRECT SUPERVISION), THE CONTRACTOR-PROVIDED DATA APPEARS TO REPRESENT THE PROJECT AS CONSTRUCTED.  
 DATA TRANSFER CHECKED BY: \_\_\_\_\_ TITLE: \_\_\_\_\_  
 COMPANY: \_\_\_\_\_ DATE: \_\_\_\_\_  
 BY: \_\_\_\_\_

DATA	DRAWN BY	CHECKED BY
BASE		
TOPOGRAPHY		
PROFILE		
STORM SEWER		
WATER/SANITARY SEWER		
GAS		
TELEPHONE		
ELECTRIC		
DESIGN		
QUANTITIES		
PRELIMINARY/FINAL		
MUNICIPAL/STATE		

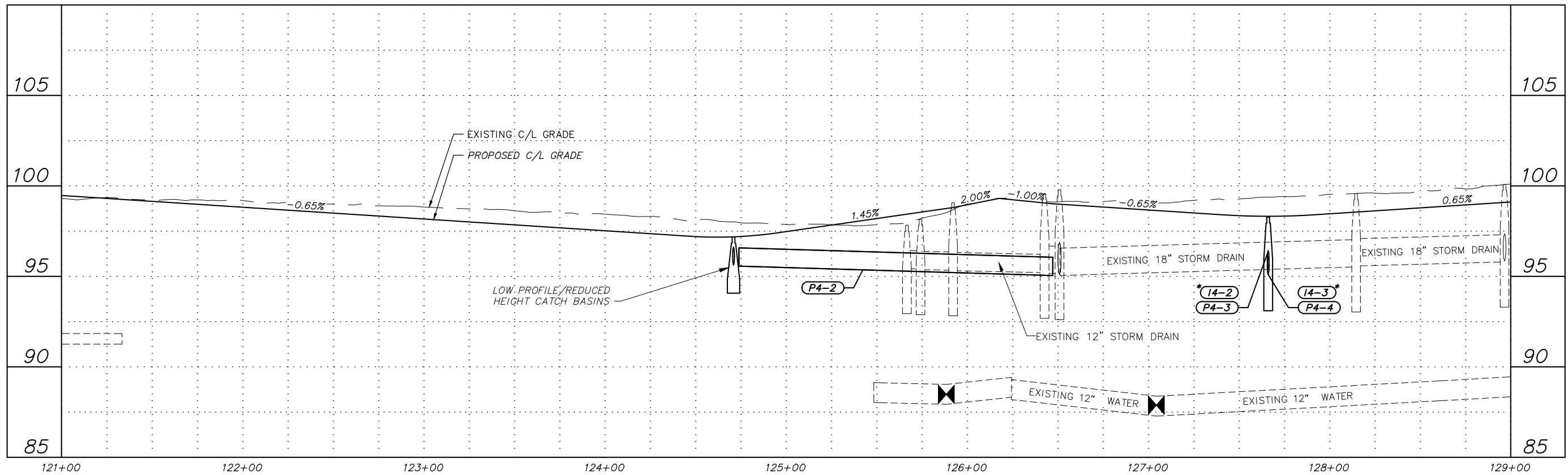
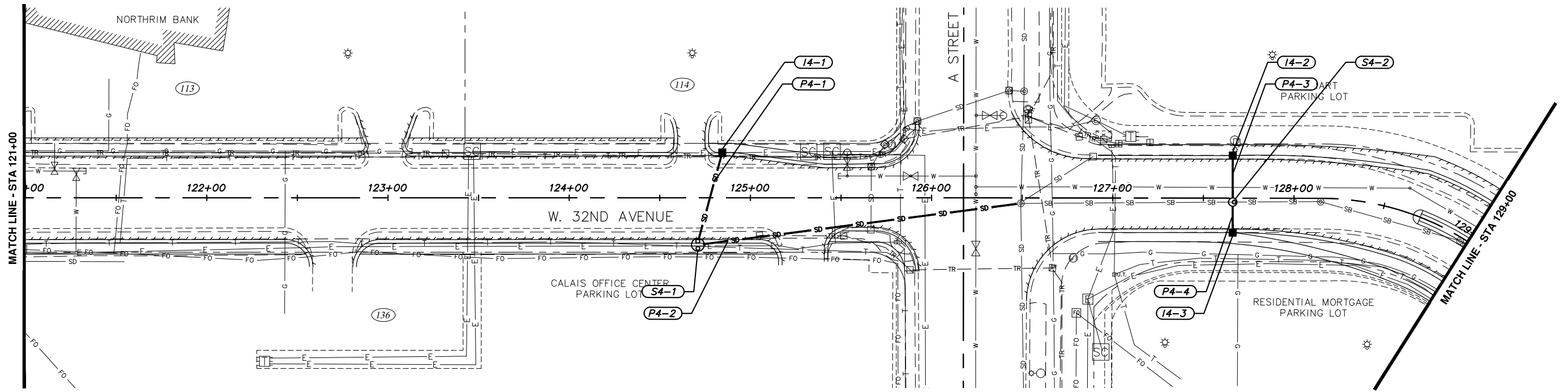
FIELD BOOKS	BM NO.	LOCATION	ELEV.	REV.	DATE	DESCRIPTION	BY

**CRW ENGINEERING GROUP, LLC**  
 3940 ARCTIC BLVD, SUITE 300  
 ANCHORAGE, ALASKA 99503  
 PHONE: (907) 562-3252  
 #AEC1882-AK

MUNICIPALITY OF ANCHORAGE



PROJECT MANAGEMENT AND ENGINEERING DEPARTMENT  
 16-29 W. 32ND AVE & E. 33RD AVE UPGRADES ARCTIC BOULEVARD TO OLD SEWARD HIGHWAY SCHED B  
**STORM DRAIN PLAN AND PROFILE**  
 W. 32ND AVENUE  
 STA. 113+50 TO 121+00  
 SCALE HOR. 1"=30' VER. 1"=3'  
 GRID SW630, SW631  
 DATE DEC 2017 STATUS DSR SHEET C3 of C9



File: E:\Jobs\10136100 W 32nd Ave Upgrade\00 CADD\01 Working Set\01 Civil\10136100 Plan And Profile - Storm Drain\_Alt 1.dwg

**RECORD DRAWING**  
 1. DATA PROVIDED BY: \_\_\_\_\_ TITLE: \_\_\_\_\_  
 THIS WILL SERVE TO CERTIFY THAT THESE RECORD DRAWINGS ARE A TRUE AND ACCURATE REPRESENTATION OF THE PROJECT AS CONSTRUCTED.  
 CONTRACTOR: \_\_\_\_\_ DATE: \_\_\_\_\_  
 BY: \_\_\_\_\_  
 2. DATA TRANSFERRED BY: \_\_\_\_\_ TITLE: \_\_\_\_\_  
 COMPANY: \_\_\_\_\_ DATE: \_\_\_\_\_  
 3. BASED ON PERIODIC FIELD OBSERVATIONS BY THE ENGINEER (OR AN INDIVIDUAL UNDER HIS/HER DIRECT SUPERVISION), THE CONTRACTOR-PROVIDED DATA APPEARS TO REPRESENT THE PROJECT AS CONSTRUCTED.  
 DATA TRANSFER CHECKED BY: \_\_\_\_\_ TITLE: \_\_\_\_\_  
 COMPANY: \_\_\_\_\_ DATE: \_\_\_\_\_  
 BY: \_\_\_\_\_

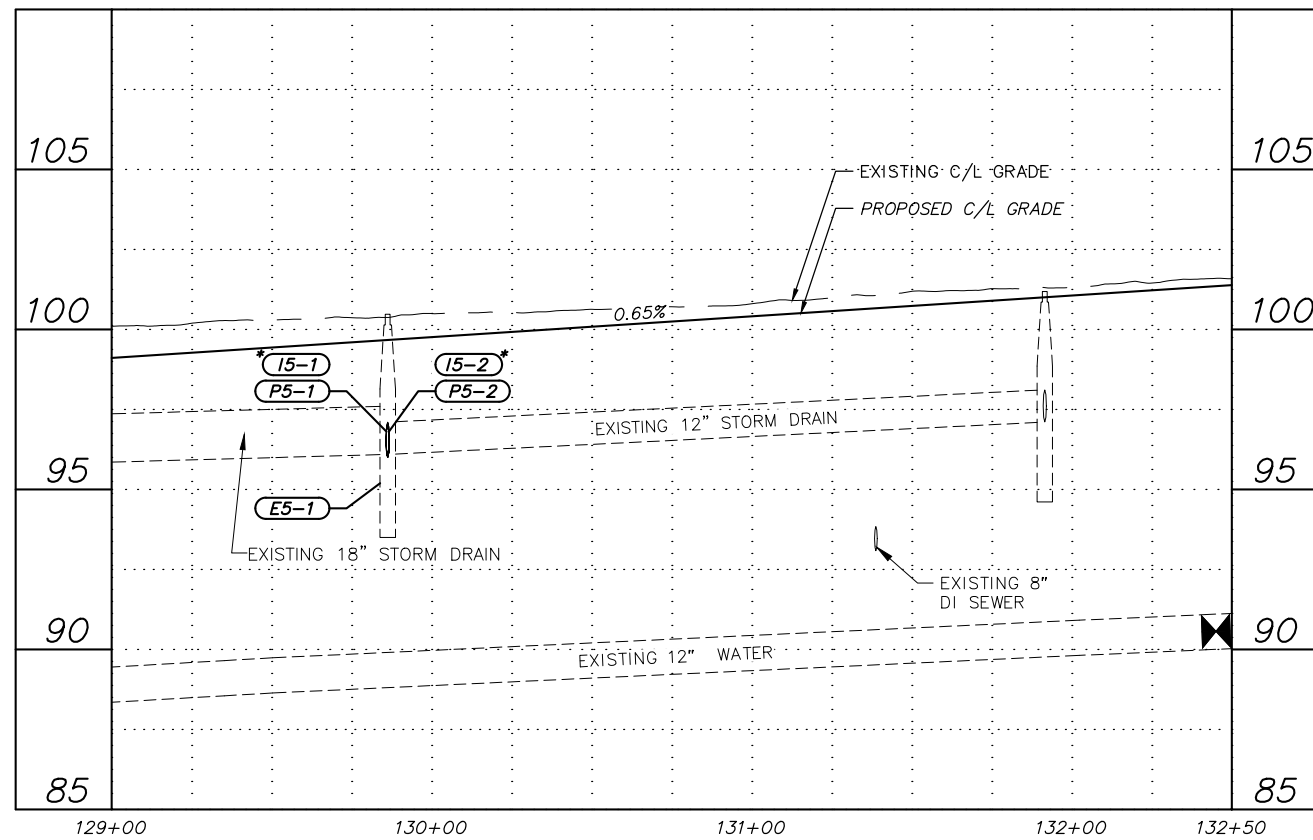
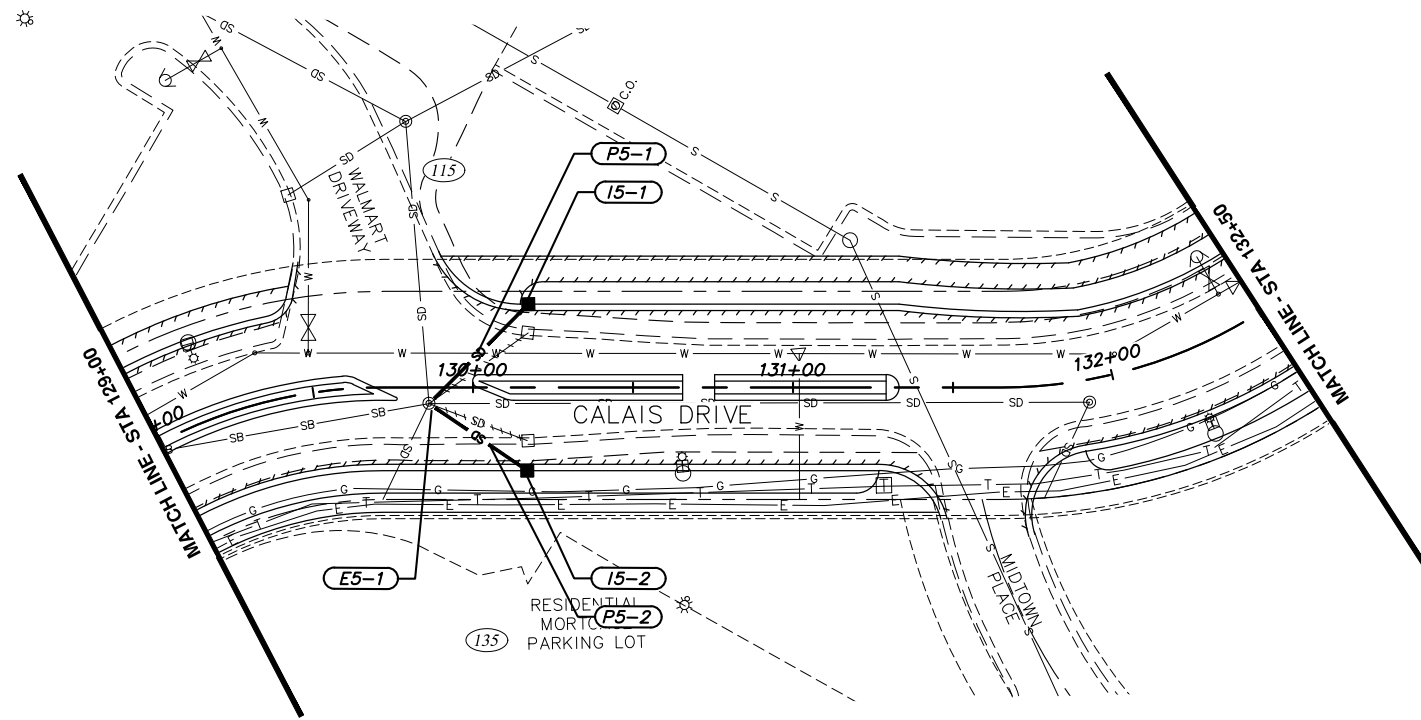
DATA	DRAWN BY	CHECKED BY
BASE		
TOPOGRAPHY		
PROFILE		
STORM SEWER		
WATER/SANITARY SEWER		
GAS		
TELEPHONE		
ELECTRIC		
DESIGN		
QUANTITIES		
PRELIMINARY/FINAL		
MUNICIPAL/STATE		

FIELD BOOKS	BM NO.	LOCATION	ELEV.	REV	DATE	DESCRIPTION	BY

**CRW ENGINEERING GROUP, LLC**  
 3940 ARCTIC BLVD, SUITE 300  
 ANCHORAGE, ALASKA 99503  
 PHONE: (907) 562-3252  
 #AECLE882-AR



**PROJECT MANAGEMENT AND ENGINEERING DEPARTMENT**  
 16-29 W. 32ND AVE & E. 33RD AVE UPGRADES SCHED B  
 ARCTIC BOULEVARD TO OLD SEWARD HIGHWAY  
**STORM DRAIN PLAN AND PROFILE**  
 W. 32ND AVENUE  
 STA. 121+00 TO 129+00  
 SCALE HOR. 1"=30'  
 VER. 1"=3'  
 GRID SW#630, SW#631  
 DATE DEC 2017 STATUS DSR SHEET C4 of C9



File: s:\jobdata\10136.00 W 32nd And E 33rd Avenue Upgrade\00 CADD\01 Working Set\01 Civil\10136.00 Plan And Profile - Storm Drain\_Alt 1.dwg

**RECORD DRAWING**  
 1. DATA PROVIDED BY: \_\_\_\_\_ TITLE: \_\_\_\_\_  
 THIS WILL SERVE TO CERTIFY THAT THESE RECORD DRAWINGS ARE A TRUE AND ACCURATE REPRESENTATION OF THE PROJECT AS CONSTRUCTED.  
 CONTRACTOR: \_\_\_\_\_ TITLE: \_\_\_\_\_ DATE: \_\_\_\_\_  
 BY: \_\_\_\_\_  
 2. DATA TRANSFERRED BY: \_\_\_\_\_ TITLE: \_\_\_\_\_  
 COMPANY: \_\_\_\_\_ DATE: \_\_\_\_\_  
 3. BASED ON PERIODIC FIELD OBSERVATIONS BY THE ENGINEER (OR AN INDIVIDUAL UNDER HIS/HER DIRECT SUPERVISION), THE CONTRACTOR-PROVIDED DATA APPEARS TO REPRESENT THE PROJECT AS CONSTRUCTED.  
 DATA TRANSFER CHECKED BY: \_\_\_\_\_ TITLE: \_\_\_\_\_  
 COMPANY: \_\_\_\_\_ DATE: \_\_\_\_\_  
 BY: \_\_\_\_\_

DATA	DRAWN BY	CHECKED BY
BASE	---	---
TOPOGRAPHY	---	---
PROFILE	---	---
STORM SEWER	---	---
WATER/SANITARY SEWER	---	---
GAS	---	---
TELEPHONE	---	---
ELECTRIC	---	---
DESIGN	---	---
QUANTITIES	---	---
PRELIMINARY/FINAL	---	---
MUNICIPAL/STATE	---	---

DESIGN	BM NO.	LOCATION	ELEV.	REV	DATE	DESCRIPTION	BY

60 30 0 30 60  
GRAPHIC SCALE



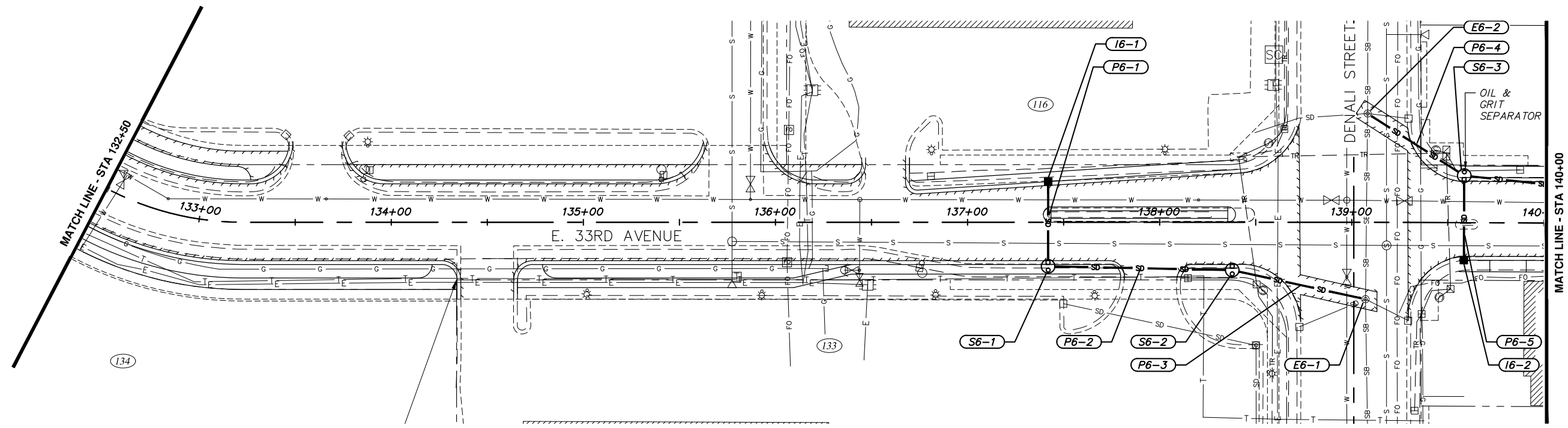
**PROJECT MANAGEMENT AND ENGINEERING DEPARTMENT**

16-29 W. 32ND AVE & E. 33RD AVE UPGRADES SCHED B  
ARCTIC BOULEVARD TO OLD SEWARD HIGHWAY

**STORM DRAIN PLAN AND PROFILE**

CALAIS DRIVE  
STA. 129+00 TO 132+50

SCALE HOR. 1"=30'	GRID SW1630, SW1631	DATE DEC 2017	STATUS DSR	SHEET C5 of C9
VER. 1"=3'				



File: E:\JobData\10138.00 W 32nd And E 33rd Avenue Upgrade\00 CADD\01 Working Set\01 Civil\10138.00 Plan And Profile - Storm Drain\_Alt 1.dwg

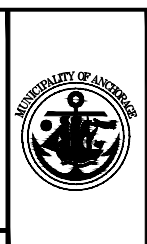
**RECORD DRAWING**  
 1. DATA PROVIDED BY: \_\_\_\_\_ TITLE: \_\_\_\_\_  
 THIS WILL SERVE TO CERTIFY THAT THESE RECORD DRAWINGS ARE A TRUE AND ACCURATE REPRESENTATION OF THE PROJECT AS CONSTRUCTED.  
 CONTRACTOR: \_\_\_\_\_ DATE: \_\_\_\_\_  
 BY: \_\_\_\_\_  
 2. DATA TRANSFERRED BY: \_\_\_\_\_ TITLE: \_\_\_\_\_  
 COMPANY: \_\_\_\_\_ DATE: \_\_\_\_\_  
 3. BASED ON PERIODIC FIELD OBSERVATIONS BY THE ENGINEER (OR AN INDIVIDUAL UNDER HIS/HER DIRECT SUPERVISION), THE CONTRACTOR-PROVIDED DATA APPEARS TO REPRESENT THE PROJECT AS CONSTRUCTED.  
 DATA TRANSFER CHECKED BY: \_\_\_\_\_ TITLE: \_\_\_\_\_  
 COMPANY: \_\_\_\_\_ DATE: \_\_\_\_\_  
 BY: \_\_\_\_\_

DATA	DRAWN BY	CHECKED BY
BASE		
TOPOGRAPHY		
PROFILE		
STORM SEWER		
WATER/SANITARY SEWER		
GAS		
TELEPHONE		
ELECTRIC		
DESIGN		
QUANTITIES		
PRELIMINARY/FINAL		
MUNICIPAL/STATE		

FIELD BOOKS	BM NO.	LOCATION	ELEV.	REV.	DATE	DESCRIPTION	BY

60 30 0 30 60  
GRAPHIC SCALE

3940 ARCTIC BLVD, SUITE 300  
ANCHORAGE, ALASKA 99503  
PHONE: (907) 562-3252  
#AEC1882-AK



**PROJECT MANAGEMENT AND ENGINEERING DEPARTMENT**

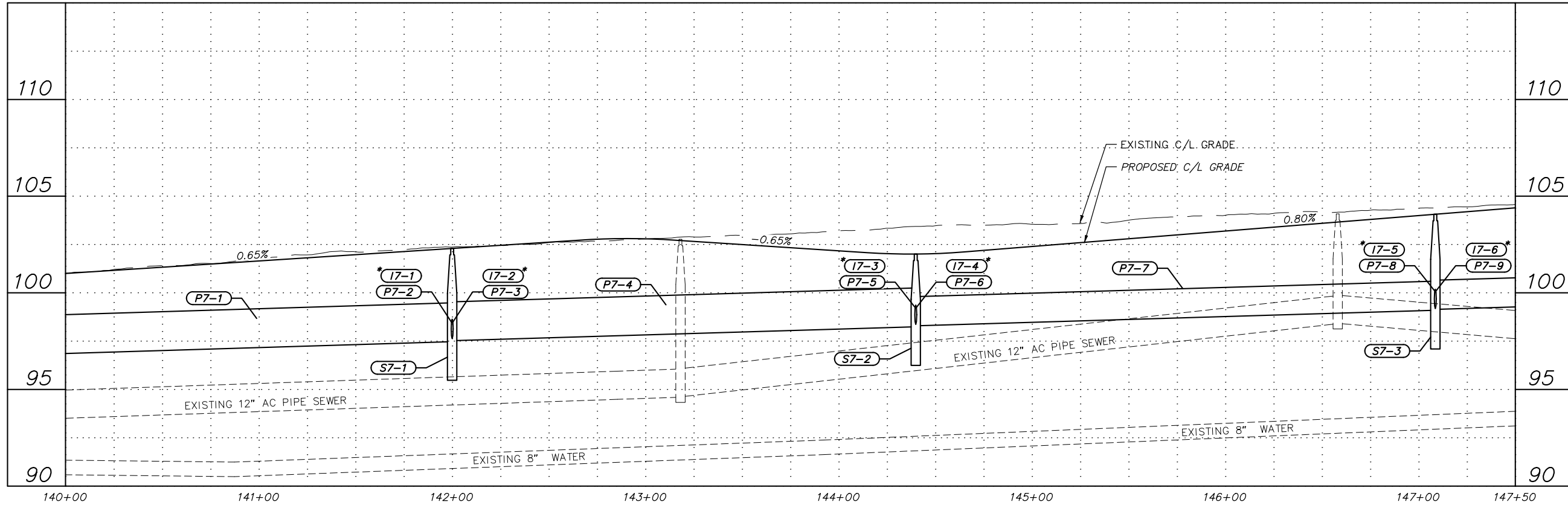
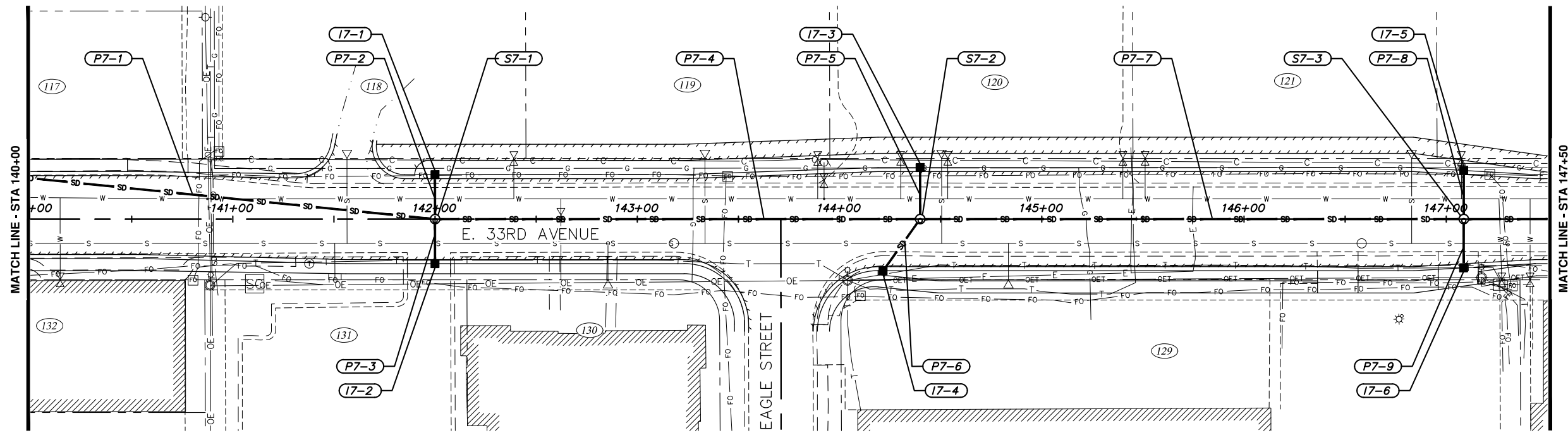
16-29 W. 32ND AVE & E. 33RD AVE UPGRADES SCHED B  
ARCTIC BOULEVARD TO OLD SEWARD HIGHWAY

**STORM DRAIN PLAN AND PROFILE**

E. 33RD AVENUE  
STA. 132+50 TO 140+00

SCALE HOR. 1"=30'	GRID SW630, SW631
VER. 1"=3'	DATE DEC 2017 STATUS DSR

SHEET C6 of C9



File: s:\jobdata\10136.00 W 32nd And E 33rd Avenue Upgrade\00 CADD\01 Working Set\01 Civil\10136.00 Plan And Profile - Storm Drain\_Alt 1.dwg

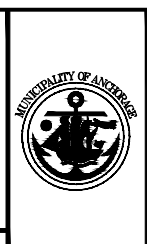
**RECORD DRAWING**  
 1. DATA PROVIDED BY: \_\_\_\_\_ TITLE: \_\_\_\_\_  
 THIS WILL SERVE TO CERTIFY THAT THESE RECORD DRAWINGS ARE A TRUE AND ACCURATE REPRESENTATION OF THE PROJECT AS CONSTRUCTED.  
 CONTRACTOR: \_\_\_\_\_ TITLE: \_\_\_\_\_ DATE: \_\_\_\_\_  
 BY: \_\_\_\_\_  
 2. DATA TRANSFERRED BY: \_\_\_\_\_ TITLE: \_\_\_\_\_  
 COMPANY: \_\_\_\_\_ DATE: \_\_\_\_\_  
 3. BASED ON PERIODIC FIELD OBSERVATIONS BY THE ENGINEER (OR AN INDIVIDUAL UNDER HIS/HER DIRECT SUPERVISION), THE CONTRACTOR-PROVIDED DATA APPEARS TO REPRESENT THE PROJECT AS CONSTRUCTED.  
 DATA TRANSFER CHECKED BY: \_\_\_\_\_ TITLE: \_\_\_\_\_  
 COMPANY: \_\_\_\_\_ DATE: \_\_\_\_\_  
 BY: \_\_\_\_\_

DATA	DRAWN BY	CHECKED BY
BASE		
TOPOGRAPHY		
PROFILE		
STORM SEWER		
WATER/SANITARY SEWER		
GAS		
TELEPHONE		
ELECTRIC		
DESIGN		
QUANTITIES		
PRELIMINARY/FINAL		
MUNICIPAL/STATE		

FIELD BOOKS	BM NO.	LOCATION	ELEV.	REV	DATE	DESCRIPTION	BY

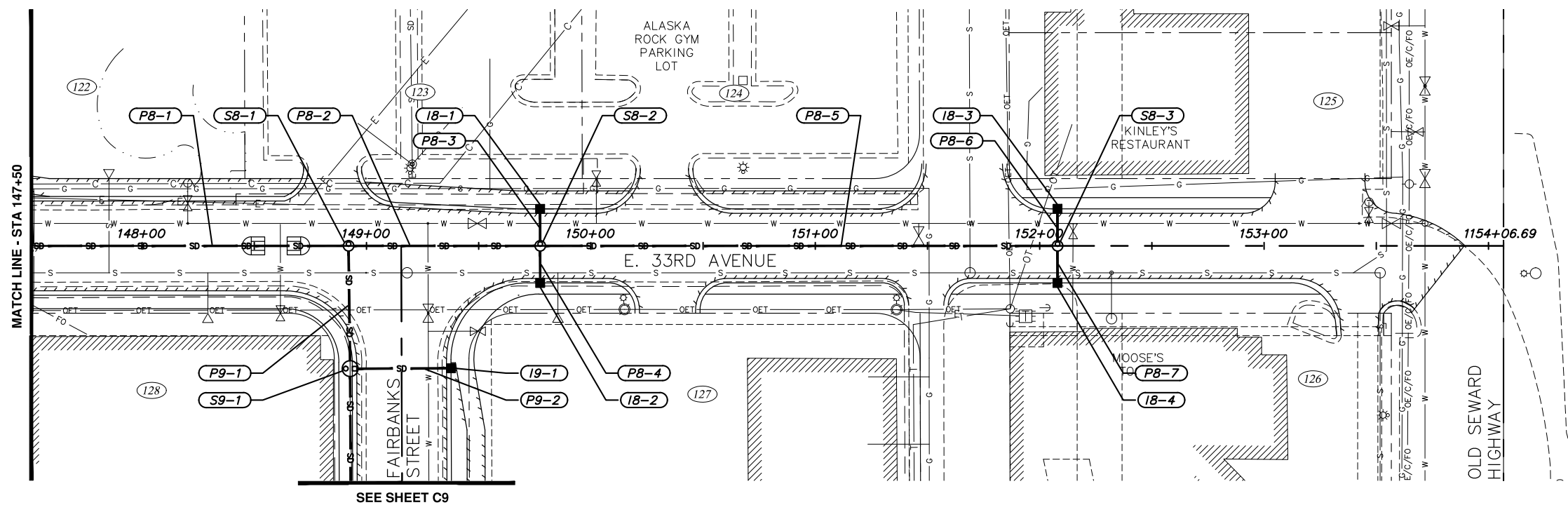
**CRW ENGINEERING GROUP, LLC**  
 3940 ARCTIC BLVD, SUITE 300  
 ANCHORAGE, ALASKA 99503  
 PHONE: (907) 562-3252  
 #AEC1882-AR

CONSULTANT  
 SEAL

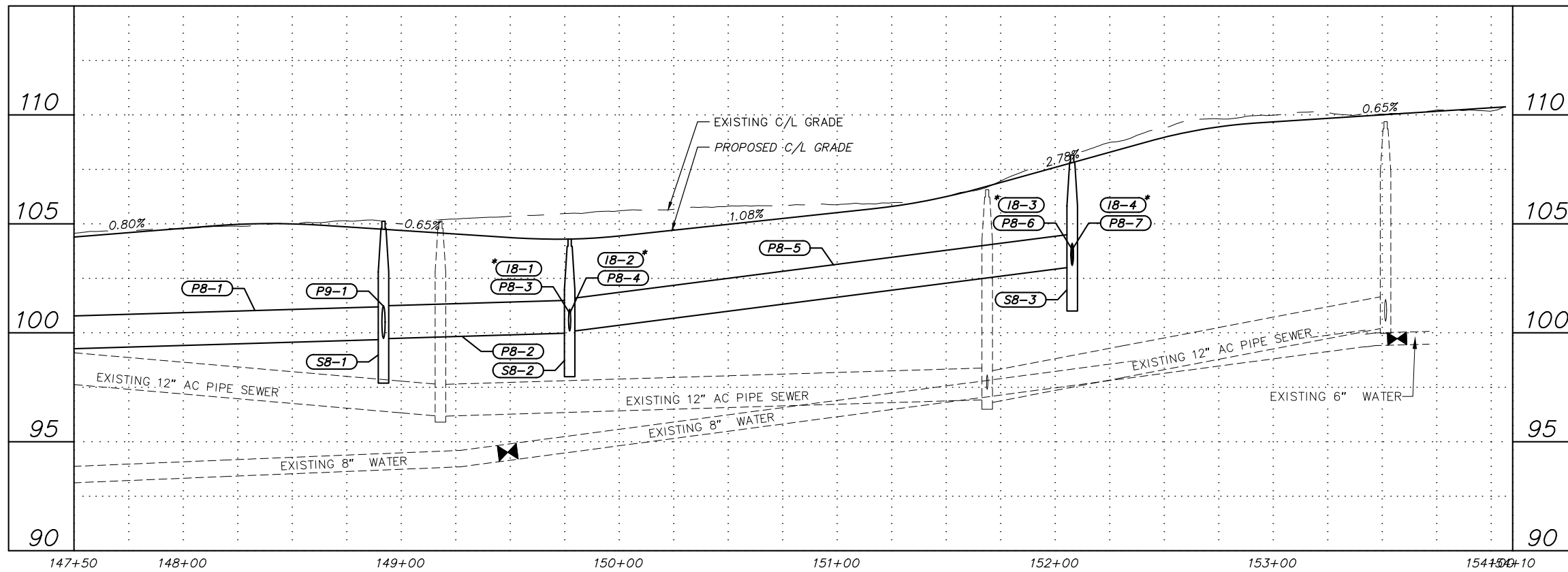


**PROJECT MANAGEMENT AND ENGINEERING DEPARTMENT**  
 16-29 W. 32ND AVE & E. 33RD AVE UPGRADES SCHED B  
 ARCTIC BOULEVARD TO OLD SEWARD HIGHWAY  
**STORM DRAIN PLAN AND PROFILE**  
 E. 33RD AVENUE  
 STA. 140+00 TO 147+50  
 SCALE HOR. 1"=30'  
 VER. 1"=3'  
 GRID SW630, SW631  
 DATE DEC 2017 STATUS DSR SHEET C7 of C9





SEE SHEET C9



File: s:\jobdata\10138.00 W 32nd And E 33rd Avenue Upgrade\00 CADD\01 Working Set\01 Civil\10138.00 Plan And Profile - Storm Drain\_Alt 1.dwg

**RECORD DRAWING**  
 1. DATA PROVIDED BY: \_\_\_\_\_ TITLE: \_\_\_\_\_  
 THIS WILL SERVE TO CERTIFY THAT THESE RECORD DRAWINGS ARE A TRUE AND ACCURATE REPRESENTATION OF THE PROJECT AS CONSTRUCTED.  
 CONTRACTOR: \_\_\_\_\_ TITLE: \_\_\_\_\_ DATE: \_\_\_\_\_  
 BY: \_\_\_\_\_  
 2. DATA TRANSFERRED BY: \_\_\_\_\_ TITLE: \_\_\_\_\_  
 COMPANY: \_\_\_\_\_ DATE: \_\_\_\_\_  
 3. BASED ON PERIODIC FIELD OBSERVATIONS BY THE ENGINEER (OR AN INDIVIDUAL UNDER HIS/HER DIRECT SUPERVISION), THE CONTRACTOR-PROVIDED DATA APPEARS TO REPRESENT THE PROJECT AS CONSTRUCTED.  
 DATA TRANSFER CHECKED BY: \_\_\_\_\_ TITLE: \_\_\_\_\_  
 COMPANY: \_\_\_\_\_ DATE: \_\_\_\_\_  
 BY: \_\_\_\_\_

DATA	DRAWN BY	CHECKED BY
BASE		
TOPOGRAPHY		
PROFILE		
STORM SEWER		
WATER/SANITARY SEWER		
GAS		
TELEPHONE		
ELECTRIC		
DESIGN		
QUANTITIES		
PRELIMINARY/FINAL		
MUNICIPAL/STATE		

FIELD BOOKS	BM NO.	LOCATION	ELEV.	REV	DATE	DESCRIPTION	BY

60 30 0 30 60  
GRAPHIC SCALE

3940 ARCTIC BLVD, SUITE 300  
ANCHORAGE, ALASKA 99503  
PHONE: (907) 562-3252  
#AEC1882-AR



**PROJECT MANAGEMENT AND ENGINEERING DEPARTMENT**

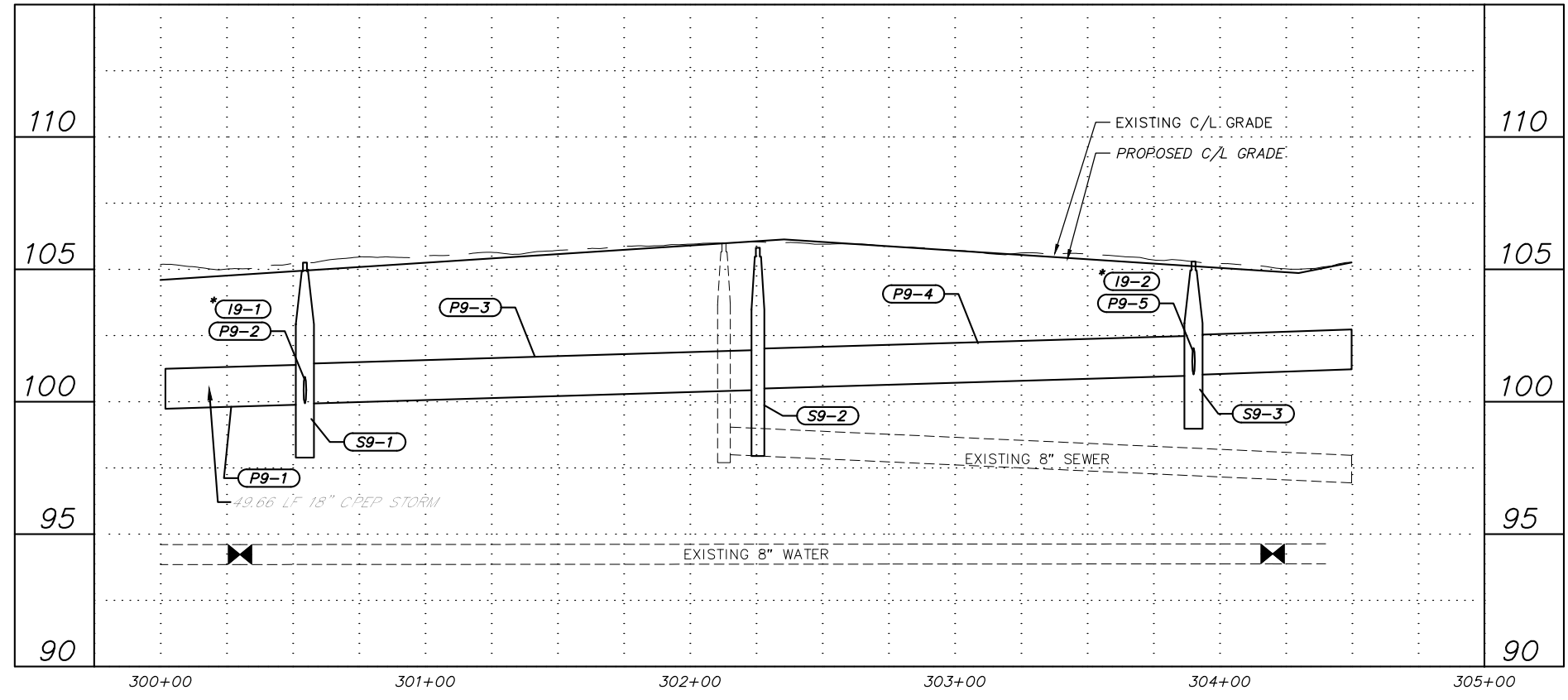
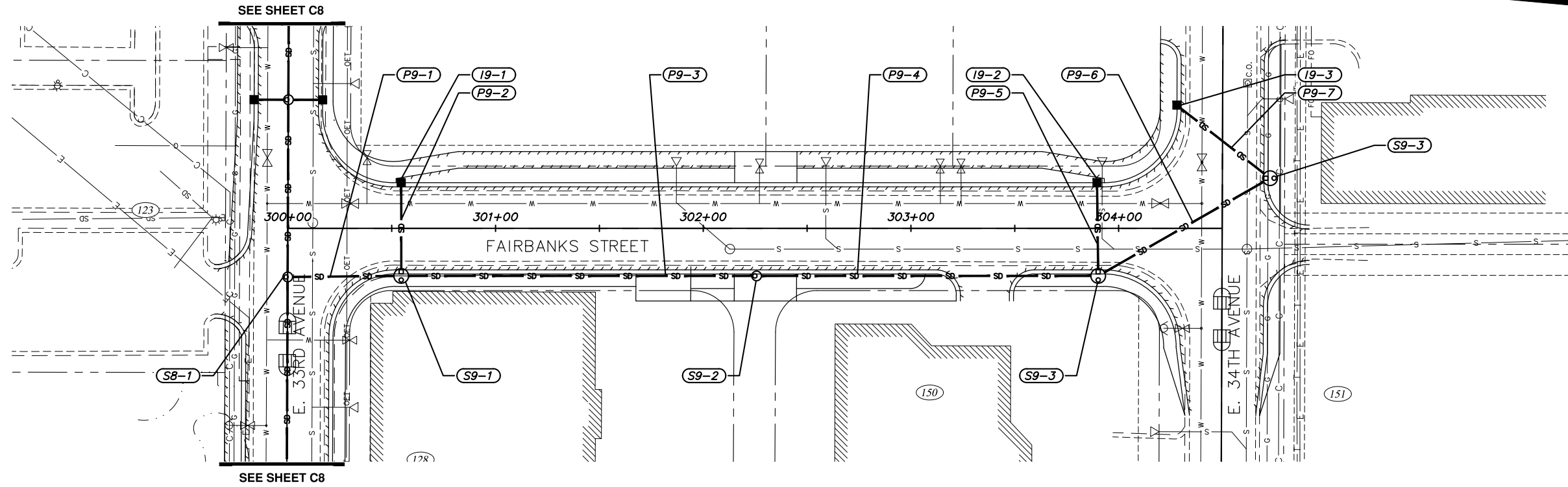
16-29 W. 32ND AVE & E. 33RD AVE UPGRADES SCHED B  
ARCTIC BOULEVARD TO OLD SEWARD HIGHWAY

**STORM DRAIN PLAN AND PROFILE**

E. 33RD AVENUE  
STA. 147+50 TO OLD SEWARD HIGHWAY

SCALE HOR. 1"=30'	GRID SW630, SW631
VER. 1"=3'	DATE DEC 2017 STATUS DSR

SHEET **C8** of **C9**



File: E:\Jobs\10138.00 W. 32nd And E. 33rd Avenue Upgrade\00 CADD\01 Working Set\01 Civil\10138.00 Plan And Profile - Storm Drain Streets\_Alt 1.dwg

**RECORD DRAWING**  
 1. DATA PROVIDED BY: \_\_\_\_\_ TITLE: \_\_\_\_\_  
 THIS WILL SERVE TO CERTIFY THAT THESE RECORD DRAWINGS ARE A TRUE AND ACCURATE REPRESENTATION OF THE PROJECT AS CONSTRUCTED.  
 CONTRACTOR: \_\_\_\_\_  
 BY: \_\_\_\_\_ TITLE: \_\_\_\_\_ DATE: \_\_\_\_\_  
 2. DATA TRANSFERRED BY: \_\_\_\_\_ TITLE: \_\_\_\_\_  
 COMPANY: \_\_\_\_\_ DATE: \_\_\_\_\_  
 3. BASED ON PERIODIC FIELD OBSERVATIONS BY THE ENGINEER (OR AN INDIVIDUAL UNDER HIS/HER DIRECT SUPERVISION), THE CONTRACTOR-PROVIDED DATA APPEARS TO REPRESENT THE PROJECT AS CONSTRUCTED.  
 DATA TRANSFER CHECKED BY: \_\_\_\_\_ TITLE: \_\_\_\_\_  
 COMPANY: \_\_\_\_\_ DATE: \_\_\_\_\_  
 BY: \_\_\_\_\_

DATA	DRAWN BY	CHECKED BY
BASE		
TOPOGRAPHY		
PROFILE		
STORM SEWER		
WATER/SANITARY SEWER		
GAS		
TELEPHONE		
ELECTRIC		
DESIGN		
QUANTITIES		
PRELIMINARY/FINAL		
MUNICIPAL/STATE		

FIELD BOOKS	BM NO.	LOCATION	ELEV.	REV	DATE	DESCRIPTION	BY

60 30 0 30 60  
GRAPHIC SCALE

3940 ARCTIC BLVD. SUITE 300  
ANCHORAGE, ALASKA 99503  
PHONE: (907) 562-3252  
#AECLE882-AR



**PROJECT MANAGEMENT AND ENGINEERING DEPARTMENT**

16-29 W. 32ND AVE & E. 33RD AVE UPGRADES SCHED B  
ARCTIC BOULEVARD TO OLD SEWARD HIGHWAY

**STORM DRAIN PLAN AND PROFILE**

FAIRBANKS STREET  
STA. 300+00 TO STA. 304+50

SCALE HOR. 1"=30'	GRID SW1630, SW1631	DATE DEC 2017	STATUS DSR	SHEET C9 of C9
VER. 1"=3'				