

LEGEND

- PARCEL NUMBER
 - EXISTING EASEMENTS
 - EXISTING EDGE OF PAVEMENT
 - EXISTING PROPERTY / RIGHT-OF-WAY LINES
 - PROPOSED PAVEMENT
 - PROPOSED PEDESTRIAN FACILITY / RAISED MEDIAN
 - PROPOSED DRIVEWAY
-
- 5'
 - 6'
 - 8'
 - 10'
 - 12'
 - 15'
 - 18'
 - 20'
 - 24'
 - 28'
 - 32'
 - 36'
 - 40'
 - 44'
 - 48'
 - 52'
 - 56'
 - 60'
 - 64'
 - 68'
 - 72'
 - 76'
 - 80'
 - 84'
 - 88'
 - 92'
 - 96'
 - 100'
 - 104'
 - 108'
 - 112'
 - 116'
 - 120'
 - 124'
 - 128'
 - 132'
 - 136'
 - 140'
 - 144'
 - 148'
 - 152'
 - 156'
 - 160'
 - 164'
 - 168'
 - 172'
 - 176'
 - 180'
 - 184'
 - 188'
 - 192'
 - 196'
 - 200'



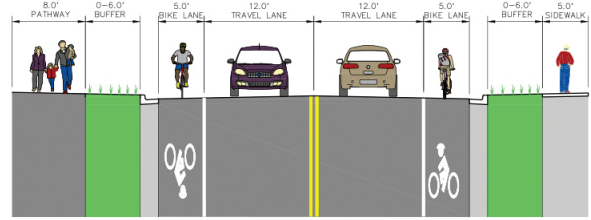
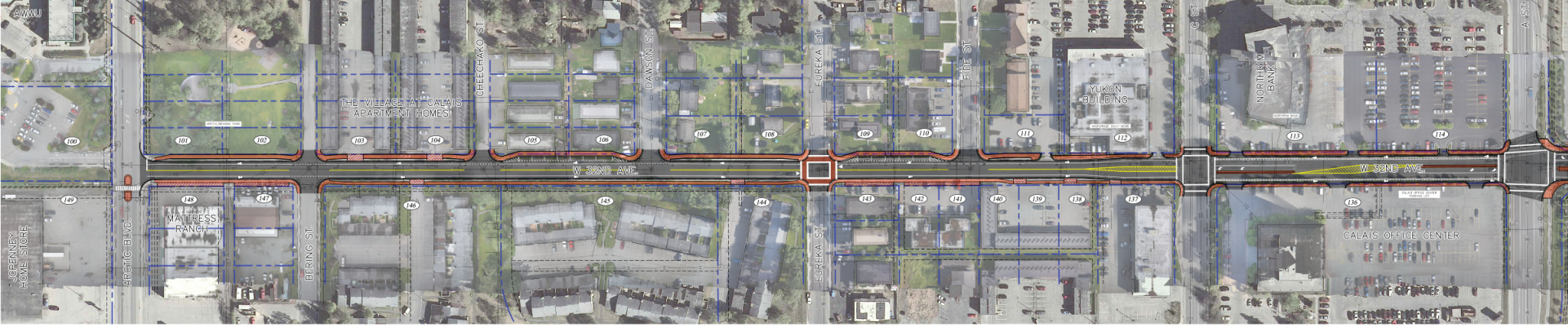
W. 32ND AVENUE - E. 33RD AVENUE UPGRADE

ARCTIC BLVD TO OLD SEWARD HIGHWAY

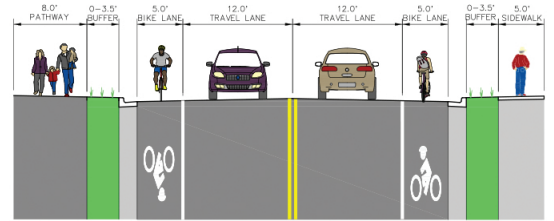
PM&E PROJECT NO. 16-29

AERIAL: 2017 ORTHO-PHOTOGRAPHY
2015 ORTHO-PHOTOGRAPHY

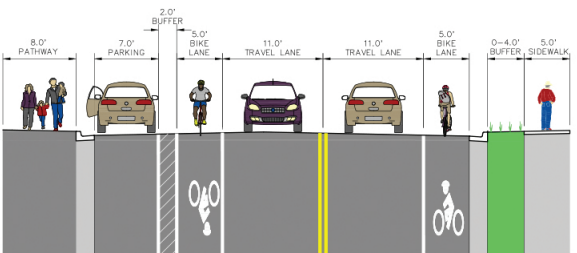
ALTERNATIVE 2



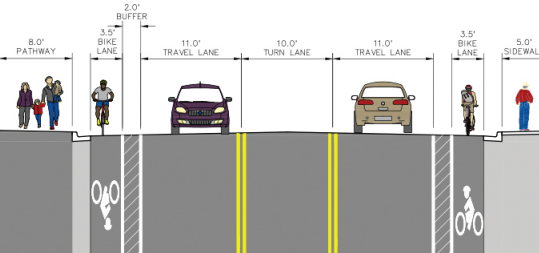
A STREET TO DENALI STREET



DENALI STREET TO OLD SEWARD HIGHWAY



ARCTIC BLVD. TO C STREET



C STREET TO A STREET

